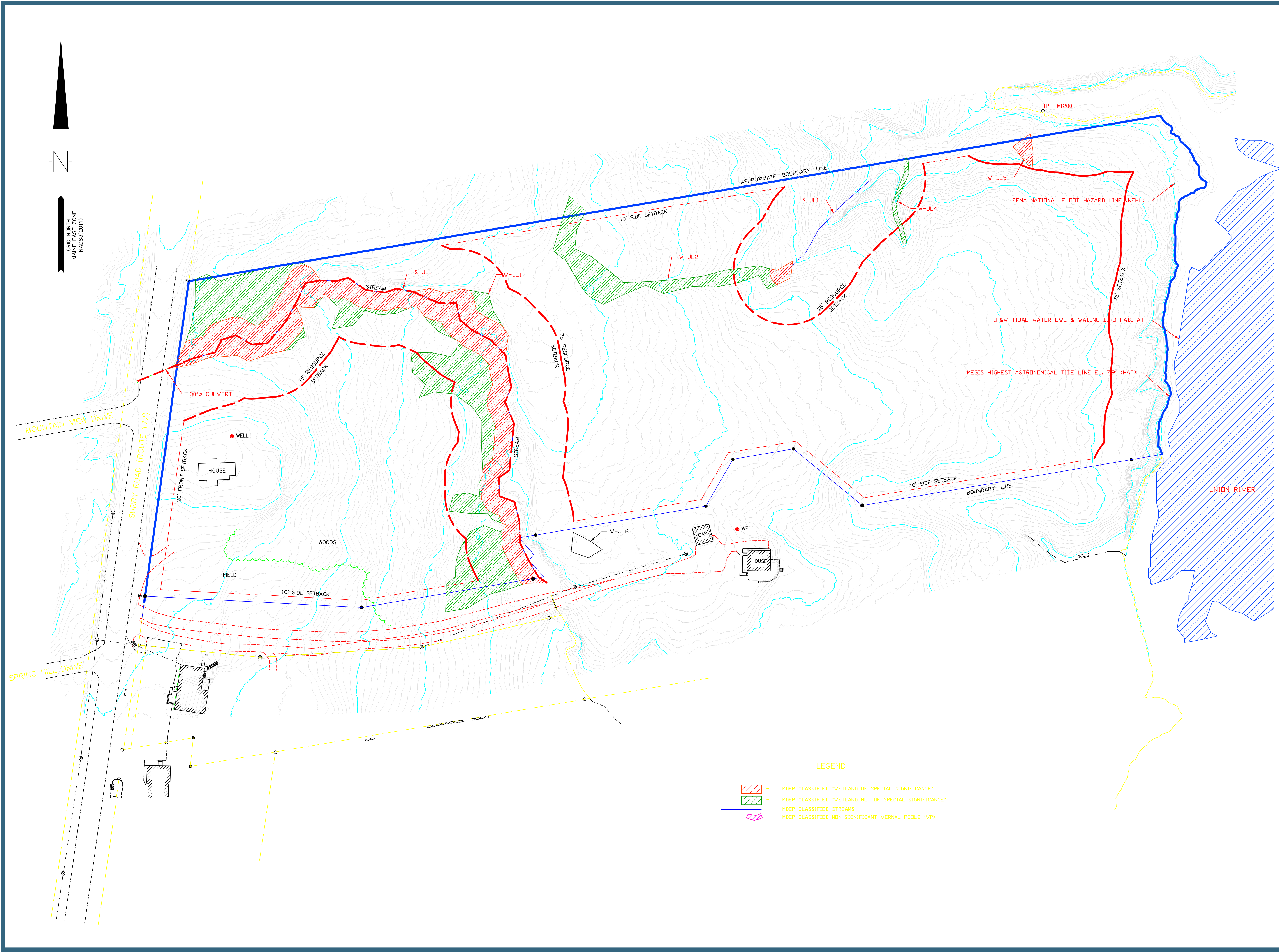


GRID NORTH
MAINE EAST ZONE
NAD83(2011)



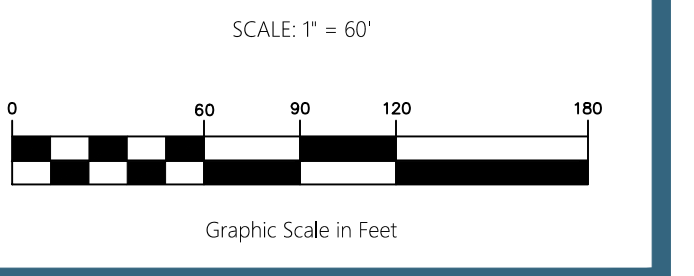
EXISTING CONDITIONS PLAN FOR:
SFS Development LLC
120 Surry Road
Ellsworth, Maine
Hancock County

OWNER OF RECORD
SFS DEVELOPMENT, LLC
PO BOX 146
ELLSWORTH, ME 04605

DATE: NOVEMBER 2, 2023 JOB NUMBER: 6248C

REVISIONS:

FULL BOUNDARY SURVEY PENDING



NOTES:
LEGEND:

LEGEND

⊕	SEWER MANHOLE/CLEANOUT
⊖	WATER SHUTOFF
⊕	ELECTRICAL PEDESTAL
⊕	HYDRANT
⊕	MONUMENTATION AS NOTED
⊕	UTILITY POLE
⊕	UTILITY POLE ANCHOR
⊕	CATCH BASIN
—	PROPERTY LINE
---	OVERHEAD UTILITY LINES
---	GUARDRAIL
---	FENCE
---	EDGE OF GRAVEL
---	EDGE OF PAVEMENT
=====	CURB
=====	RIPRAP
S	SEWER LINES
W	WATER LINES
E	UNDERGROUND ELECTRIC LINES

LEGEND

▨	MDEP CLASSIFIED "WETLAND OF SPECIAL SIGNIFICANCE"
▨	MDEP CLASSIFIED "WETLAND NOT OF SPECIAL SIGNIFICANCE"
▨	MDEP CLASSIFIED STREAMS
▨	MDEP CLASSIFIED NON-SIGNIFICANT VERNAL Pools (VP)

Herrick & Salsbury INC.
LAND SURVEYORS AND LAND USE CONSULTANTS
Helping You Protect Your Land Investment

130 Oak Street, Suite 1 Ellsworth Maine, 04605 207.667.7370	123 Main Street Suite C-1 Northeast Harbor Maine, 04662 207.276.0565
----------------------------------------------------------------------	-------------------------------------------------------------------------------

www.herrickandsalsbury.com